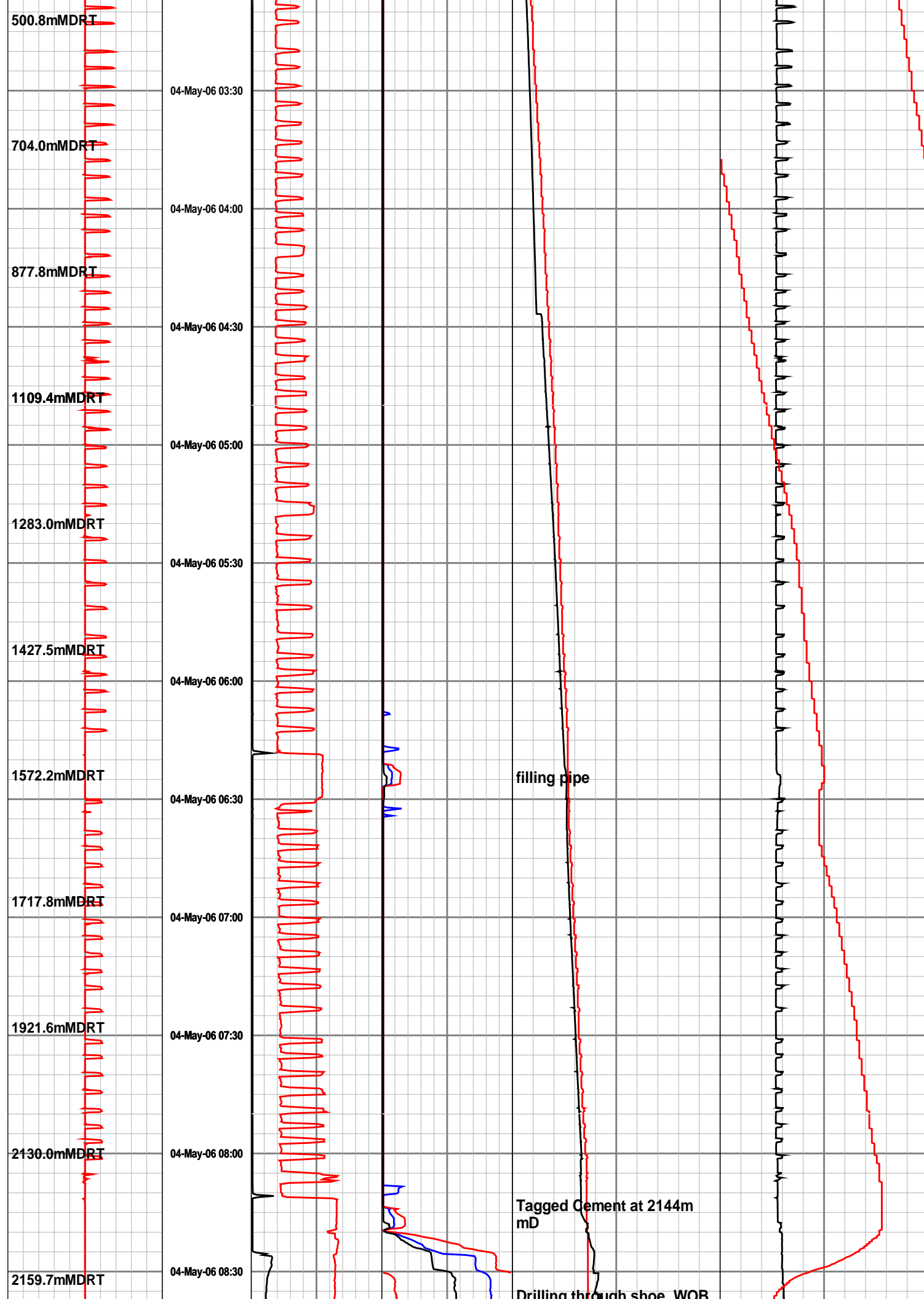
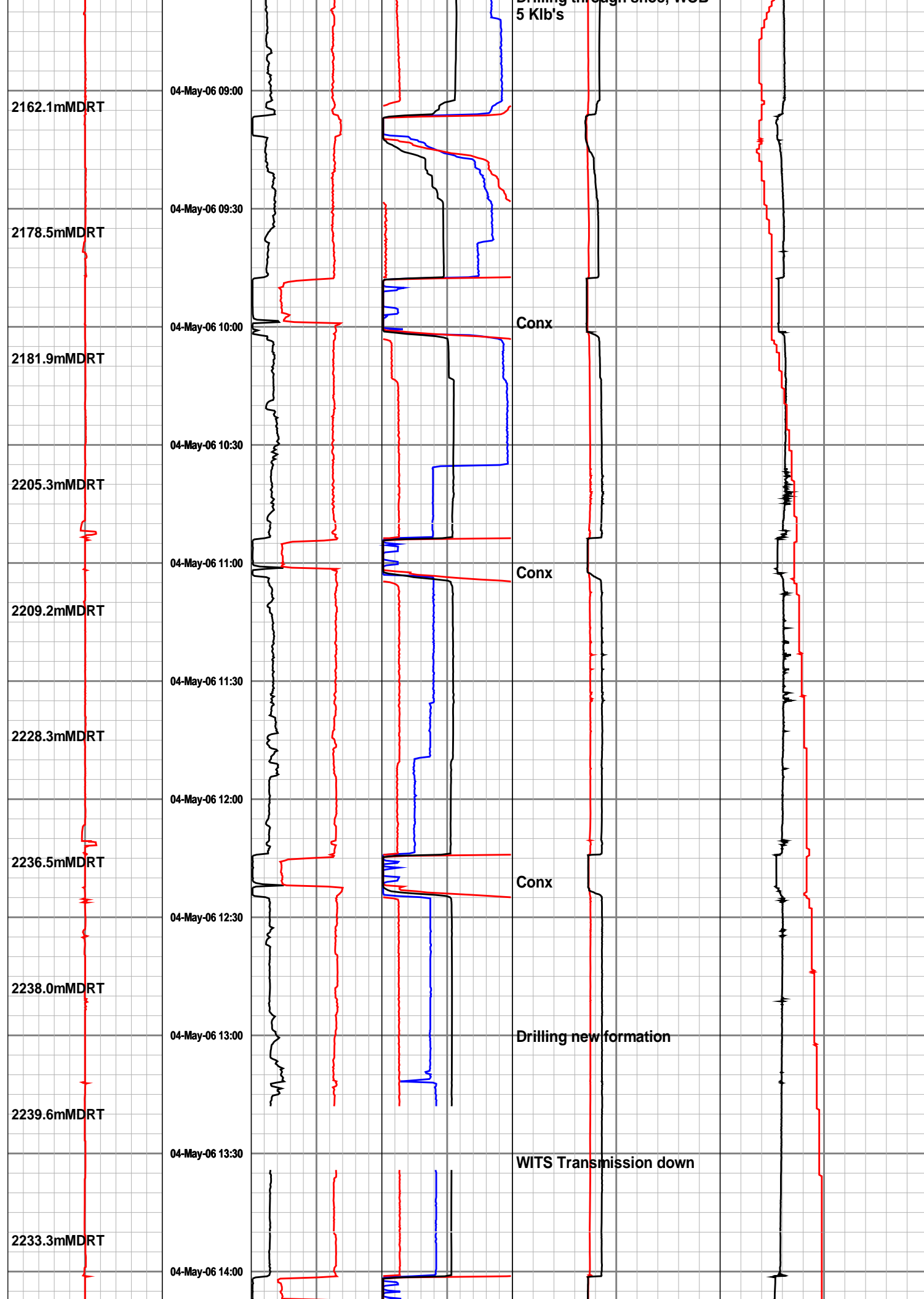


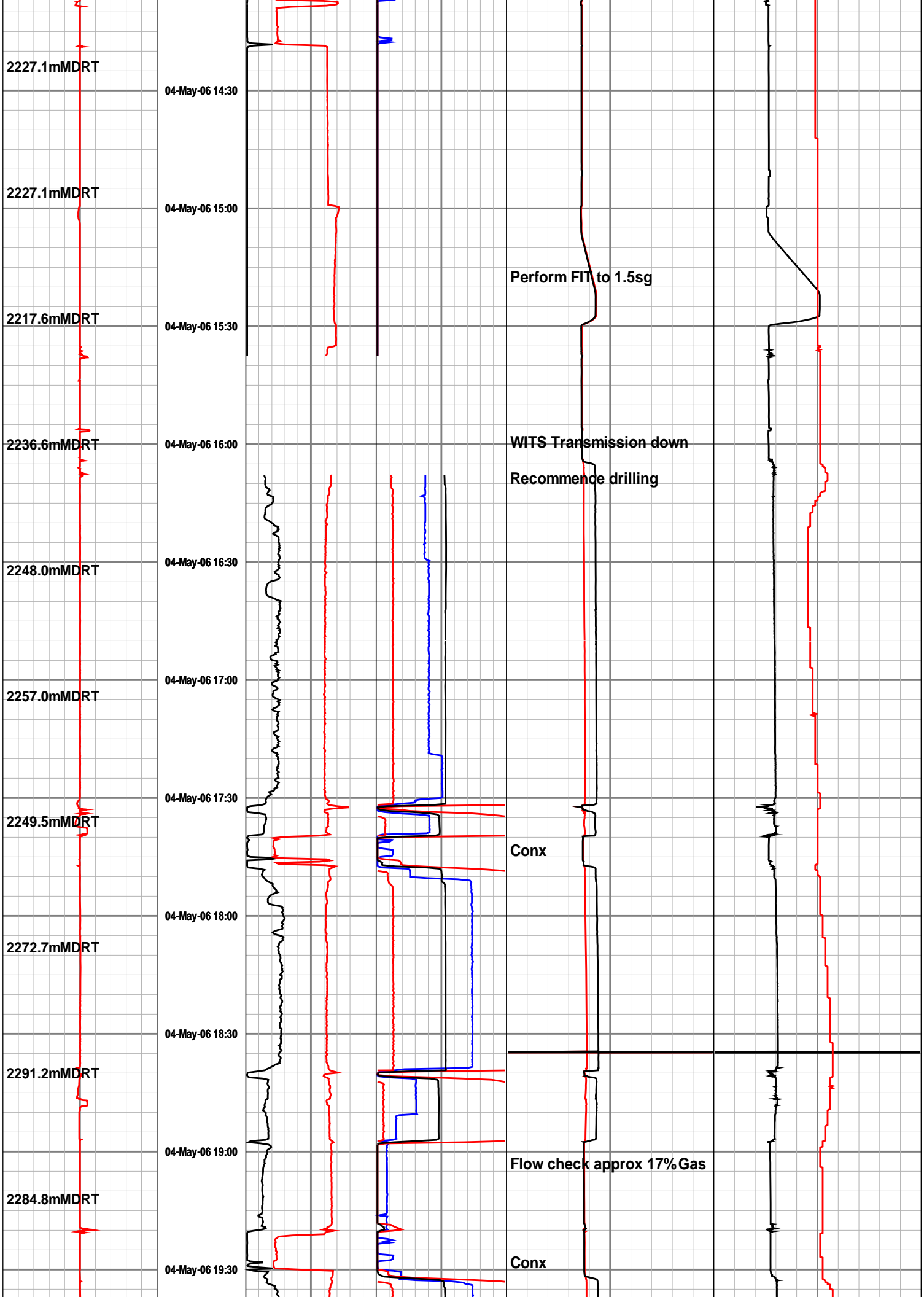
Company : Woodside Energy Ltd					
Rig : Maersk Guardian					
Well : THA01					
Country : Australia					
Field : Thylacine					
Location : Lat: 39° 14' 14.41" South GDA94 Long: 142° 54' 7.74" East GDA94					
Well : THA01					
Company : Woodside Energy Ltd					
Rig : Maersk Guardian					
LOCATION					
Latitude : Lat: 39° 14' 14.41" South GDA94 Longitude : Long: 142° 54' 7.74" East GDA94			Other Services Directional Drilling		
UTM Easting = 664,164.9 m UTM Northing = 5,655,161.4 m					
Permanent Datum : LAT Elevation : 0.00 m Elev. KB					
Log Measured From : Drill Floor 50.50 m DF 50.50 m					
Drilling Measured From : Drill Floor TIME LOG GL WD 99.30 m					
Depth Logged : 149.80 m To 2,634.15 m Unit No. : SDSS 40 Job No. : AU-FE-0003930657					
Date Logged : 13-Apr-06 To 14-May-06 Plot Type : Final					
Total Depth MD : 2,634.15 m TVD : 2,389.92 m Plot Date : 29-Aug-06					
Spud Date : 13-Apr-06					
Run No.					
Borehole Record (MD)			Run No.		
Size From To			Size From To		
100 762,000 mm 149.80 m 220.00 m					
200 584,000 mm 220.00 m 638.00 m					
300 445,000 mm 638.00 m 1173.40 m					
400 445,000 mm 1173.40 m 1357.80 m					
500 445,000 mm 1357.80 m 1530.20 m					
600 445,000 mm 1530.20 m 2240.00 m					
700 311,000 mm 2240.00 m 2387.40 m					
800 311,000 mm 2387.40 m 2634.15 m					
Casing Record (MD)					
Size Weight From To			Size Weight From To		
100 762,000 mm 149.80 m 220.00 m					
200 584,000 mm 220.00 m 638.00 m					
300 445,000 mm 638.00 m 1173.40 m					
400 445,000 mm 1173.40 m 1357.80 m					
500 445,000 mm 1357.80 m 1530.20 m					
600 445,000 mm 1530.20 m 2240.00 m					
700 311,000 mm 2240.00 m 2387.40 m					
800 311,000 mm 2387.40 m 2634.15 m					

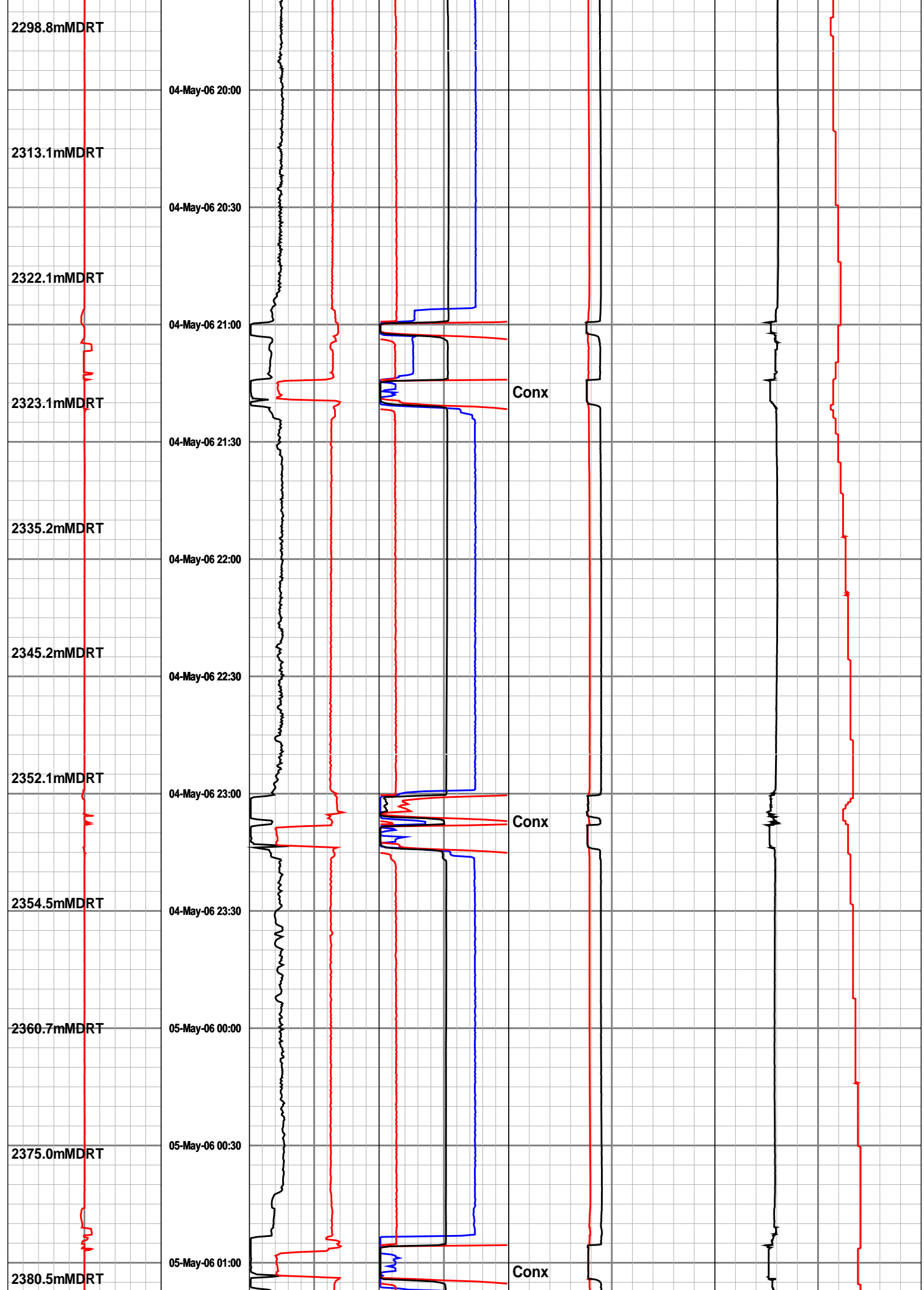
02:00hrs 4th May 2006 to 10:00hrs 5th May 2006

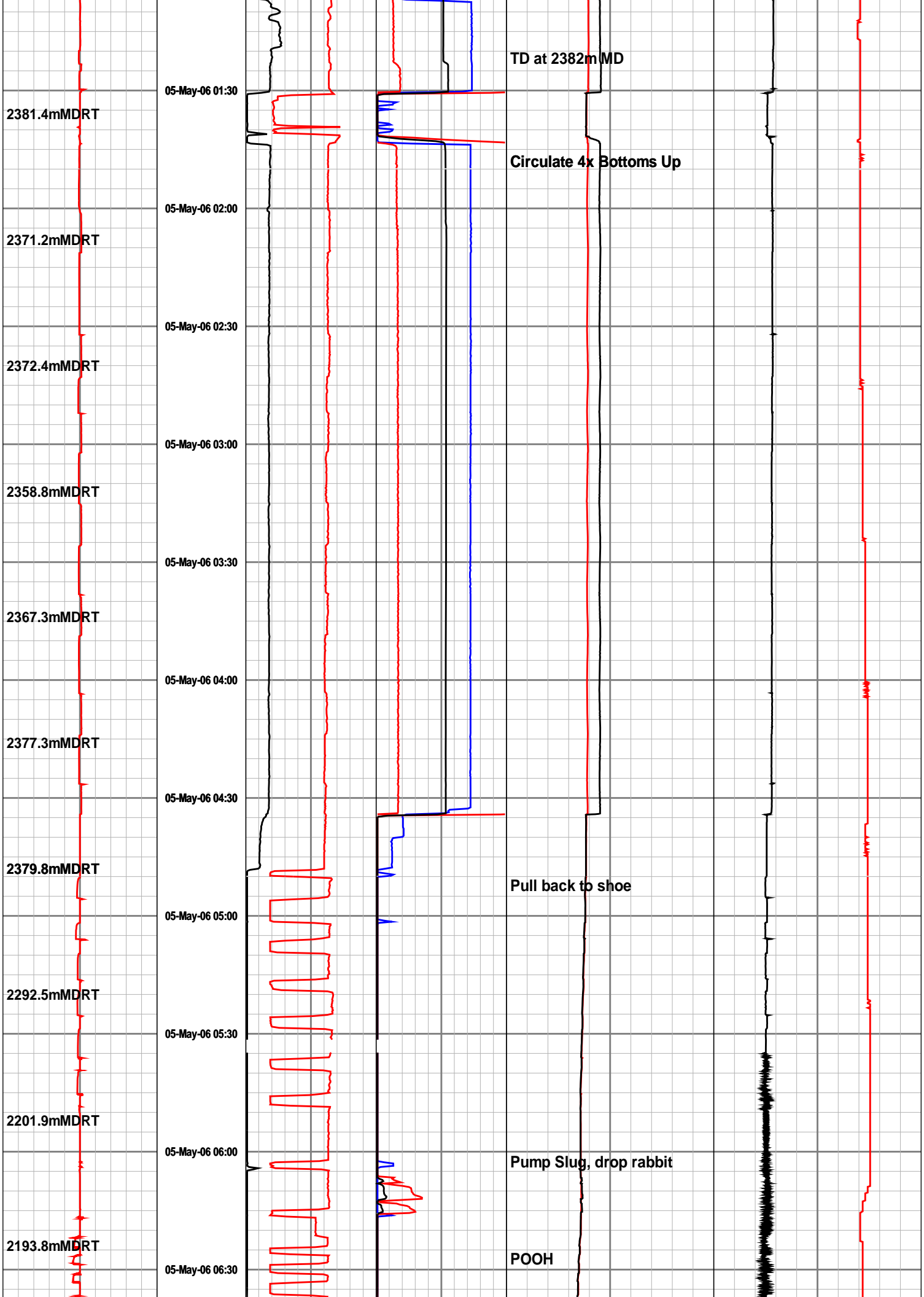
ROP Avg		RPM		Density Mud In	
200	100	0	0	100	200
metre per hr		rev per min		Sp Grav	
Running Speed		Flow In		Temperature	
-150	0	150	0	400	800
metre per min		gallon per min		celsius	
Block Position		SPP		Internal Pressure-PWD	
0	25	50	0	3K	6K
metres		lbs / in2 gauge		lbs / in2 gauge	
Time min		Torque		Annular EMW-PWD	
		foot-klb		Sp Grav	
04-May-06 02:00		0 25 50		0 5K 10K	
141.6mMDRT		0 200 400		0 5K 10K	
04-May-06 02:30		0 400 800		0 5K 10K	
297.6mMDRT		0 400 800		0 5K 10K	
04-May-06 03:00		0 400 800		0 5K 10K	

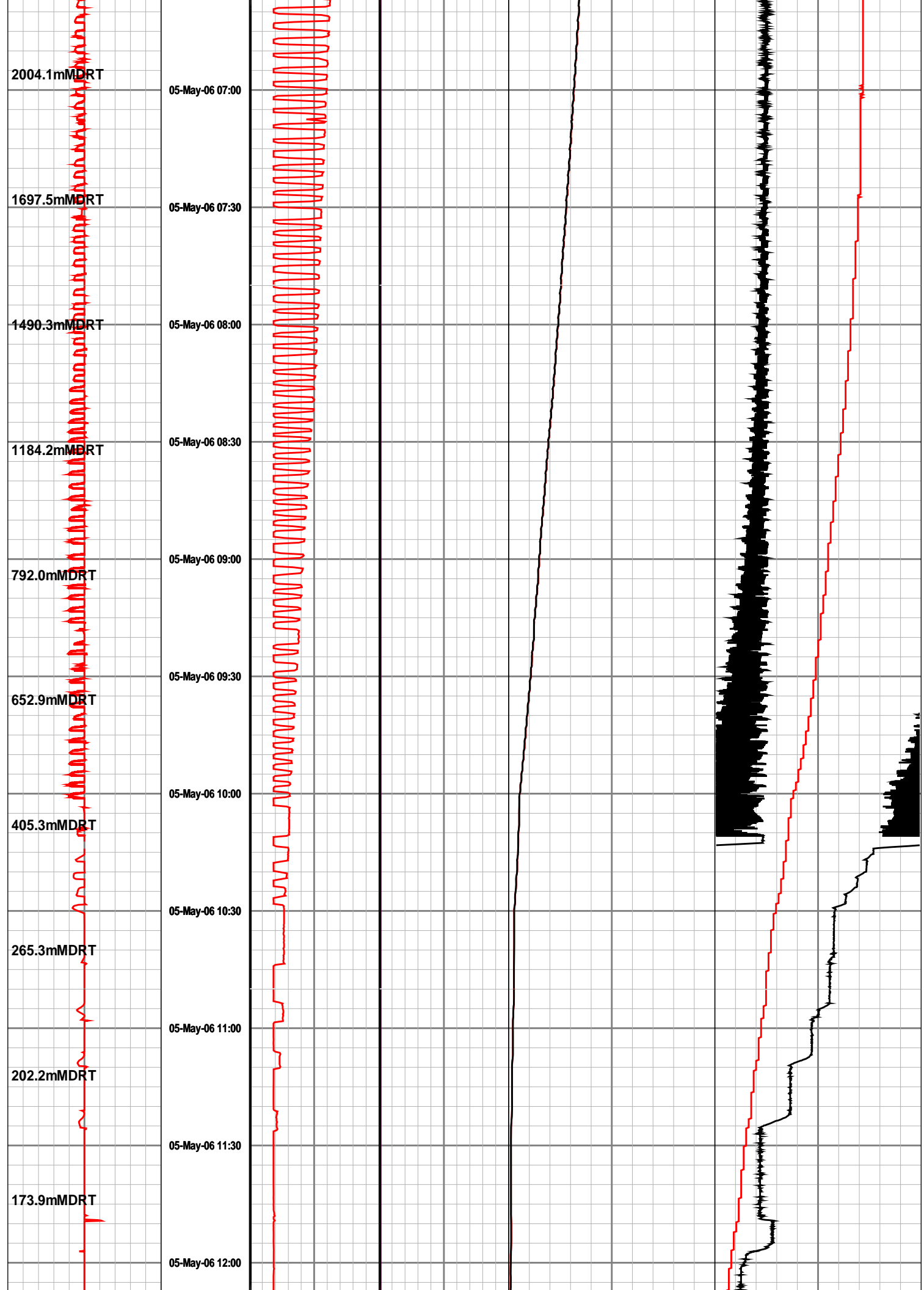


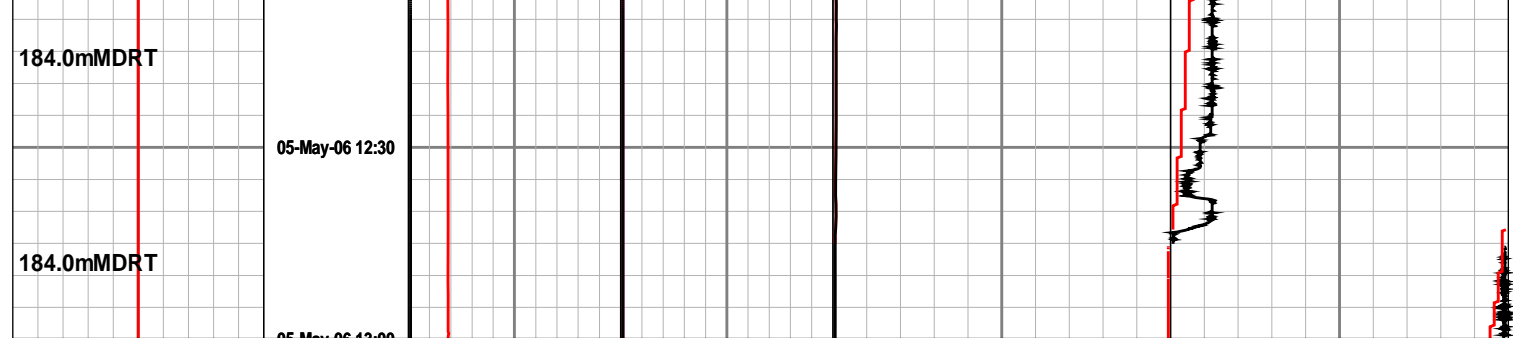












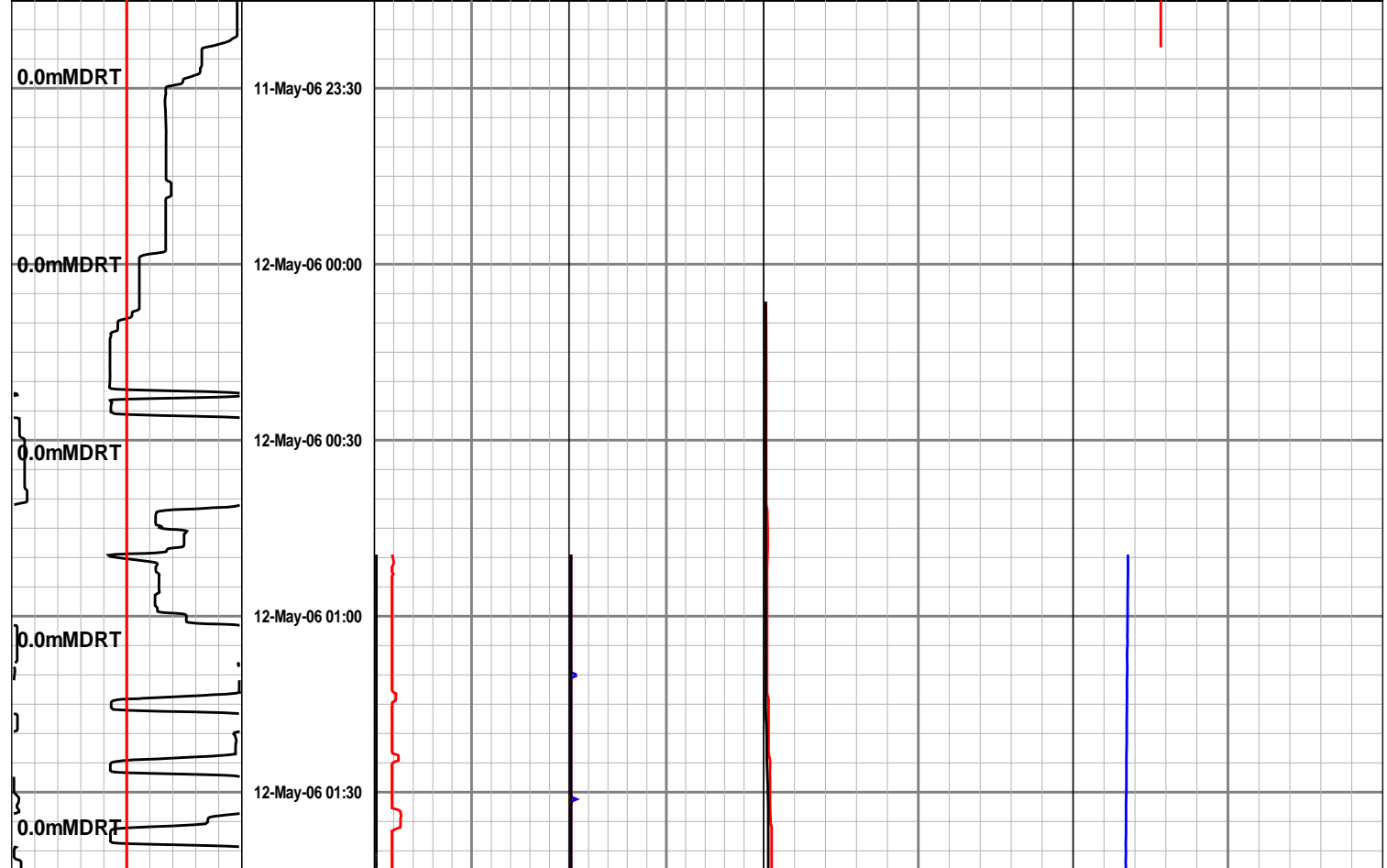
Block Position	Time	Torque	SPP	Internal Pressure-PWD	Annular EMW-PWD
0 25 50	min	0 25 50	0 3K 6K	0 5K 10K	1 1.5 2
metres		foot-klb	lbs / in2 gauge	lbs / in2 gauge	Sp Grav
Running Speed	Hookload	Flow In	Annular Pressure-PWD	Temperature	
-150 0 150	0 200 400	0 400 800	0 5K 10K	0 25 50	
metre per min	k-lbs	gallon per min	lbs / in2 gauge	celsius	
ROP Avg		RPM		Density Mud In	
200 100 0		0 100 200		1 1.5 2	
metre per hr		rev per min		Sp Grav	

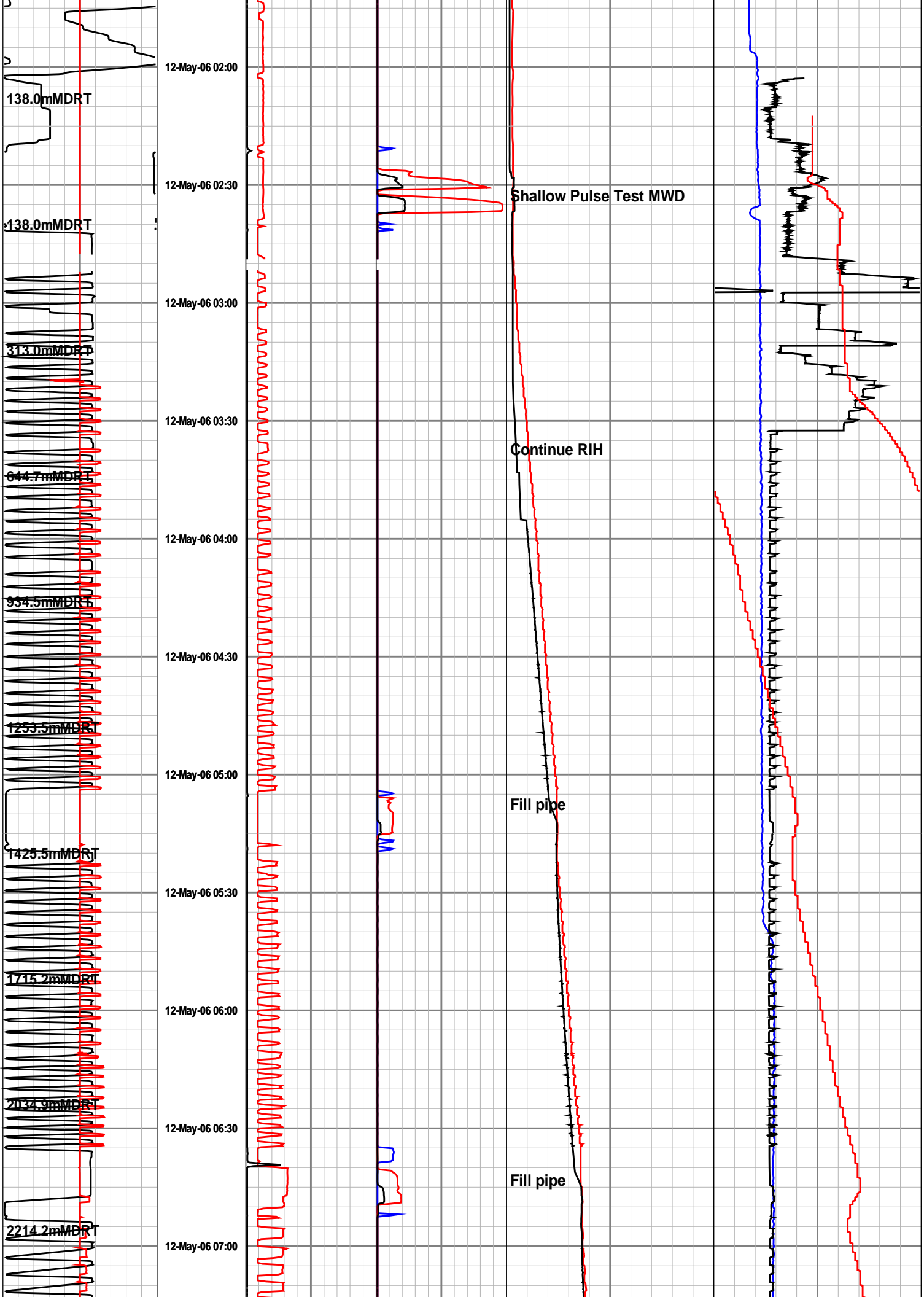
Run 800 - 311mm Hole Section

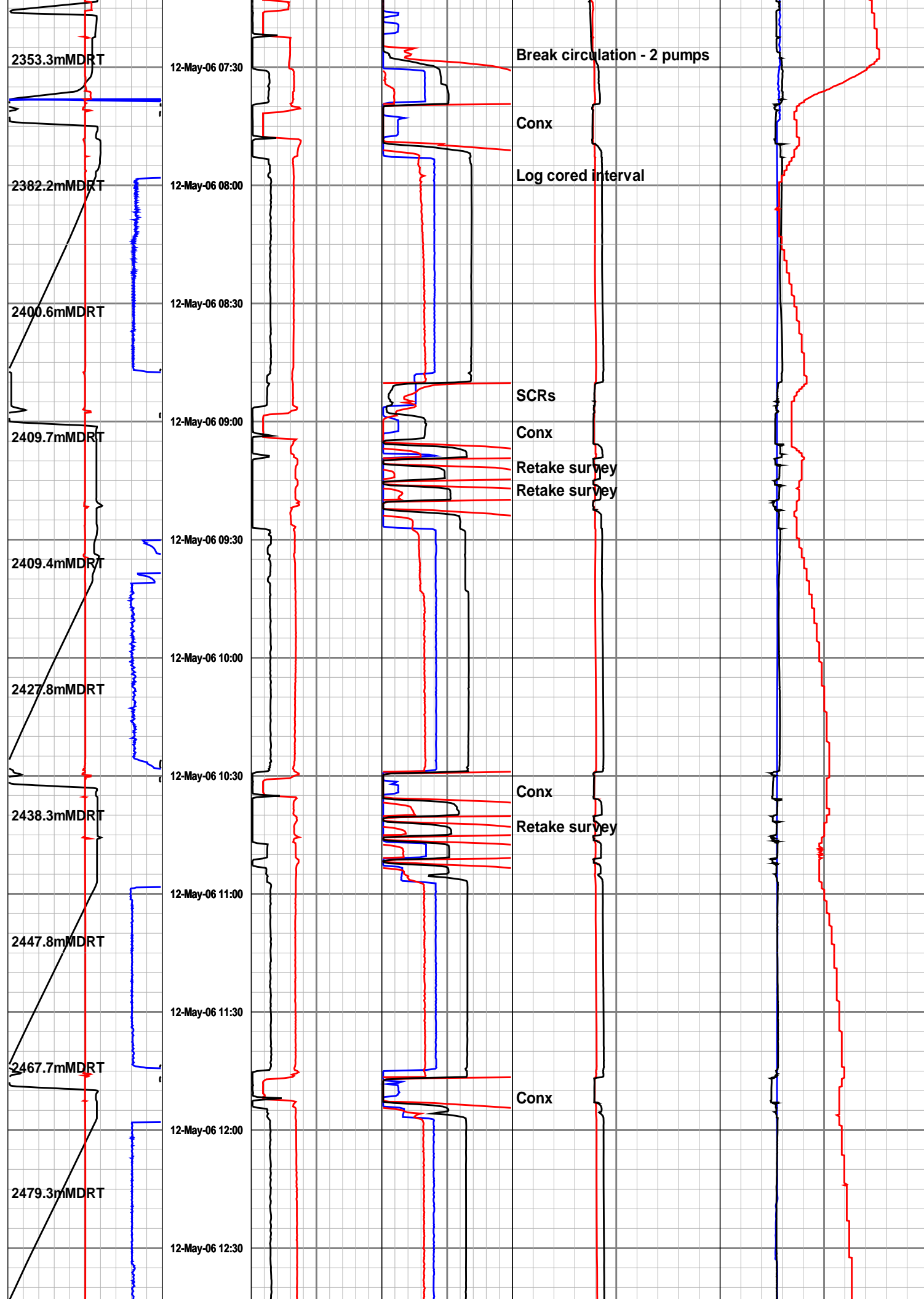
Drilled from 2387.0 to 2634.0 mMDRT

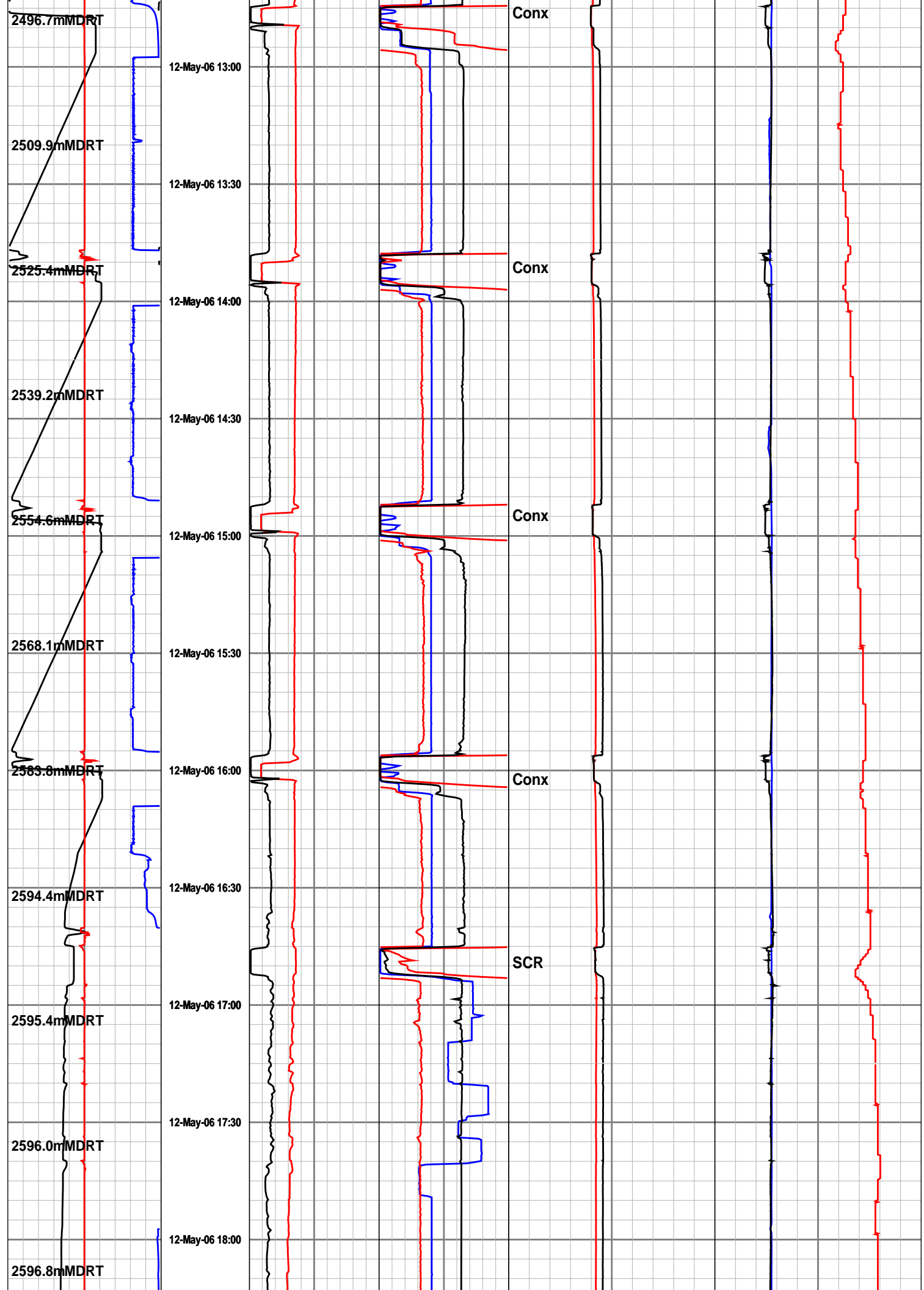
18:21hrs 11th May 2006 to 06:27hrs 14th May 2006

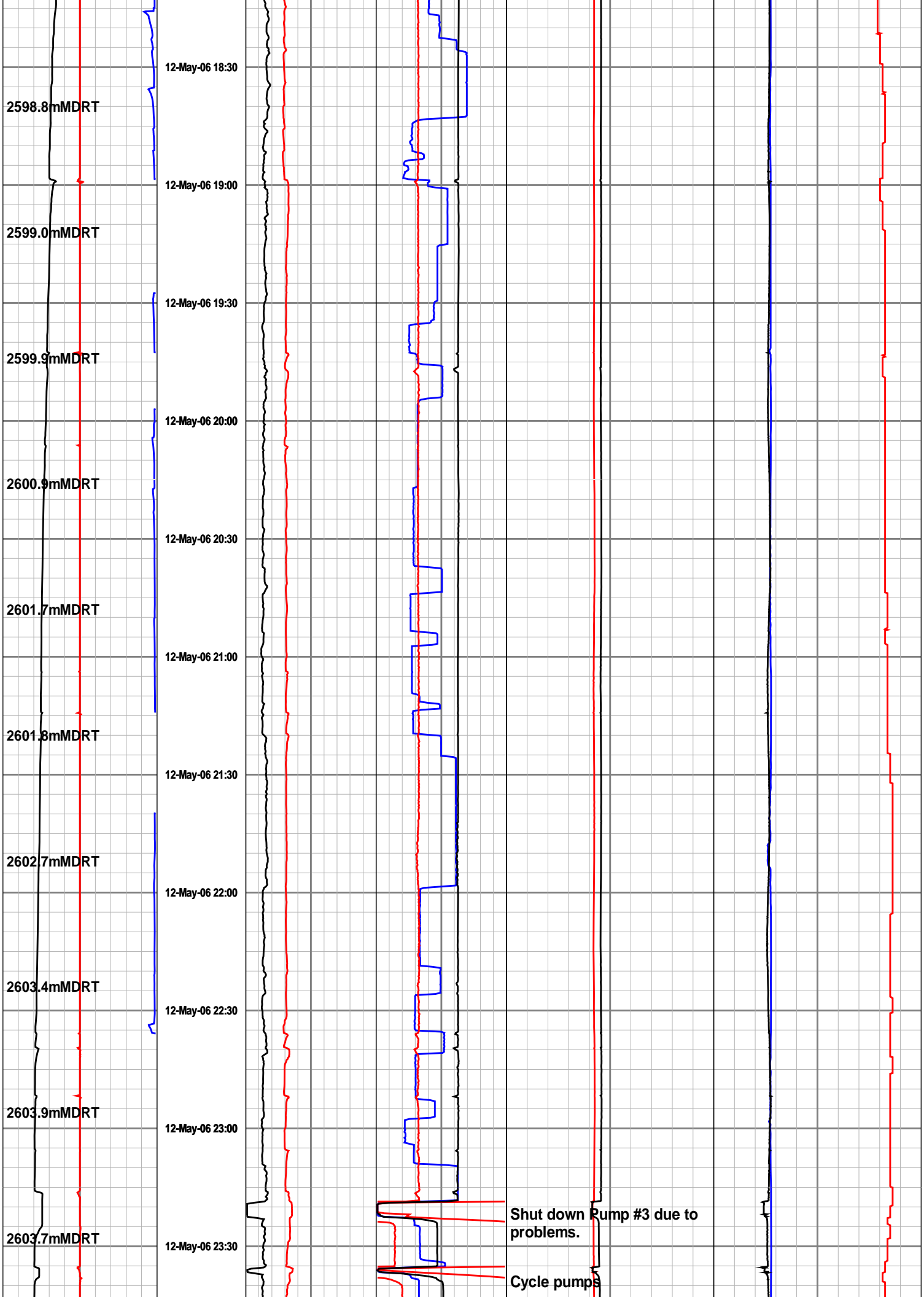
ROP Avg	Time	Hookload	Flow In	Annular Pressure-PWD	Density Mud In
200 100 0		0 200 400	0 400 800	0 5K 10K	1 1.5 2
metre per hr		k-lbs	gallon per min	lbs / in2 gauge	Sp Grav
Running Speed	Torque	SPP	Internal Pressure-PWD	Temperature	
-150 0 150	0 25 50	0 3K 6K	0 5K 10K	0 25 50	
metre per min	min	foot-klb	lbs / in2 gauge	celsius	
Block Position	Block Position	Block Position	Block Position	Block Position	Block Position
0 25 50	0 25 50	0 25 50	0 25 50	0 25 50	0 25 50
metres	metres	metres	metres	metres	metres

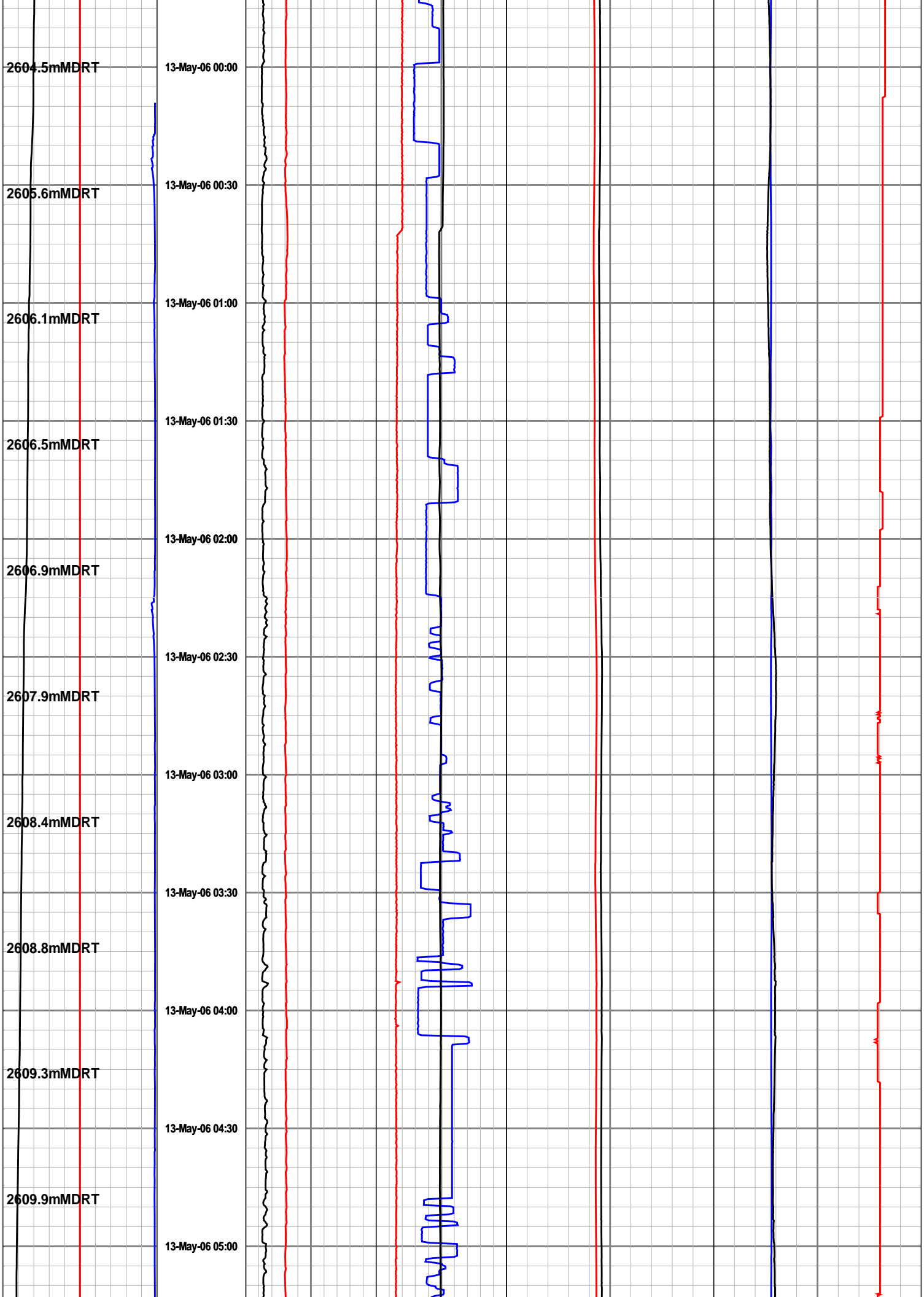


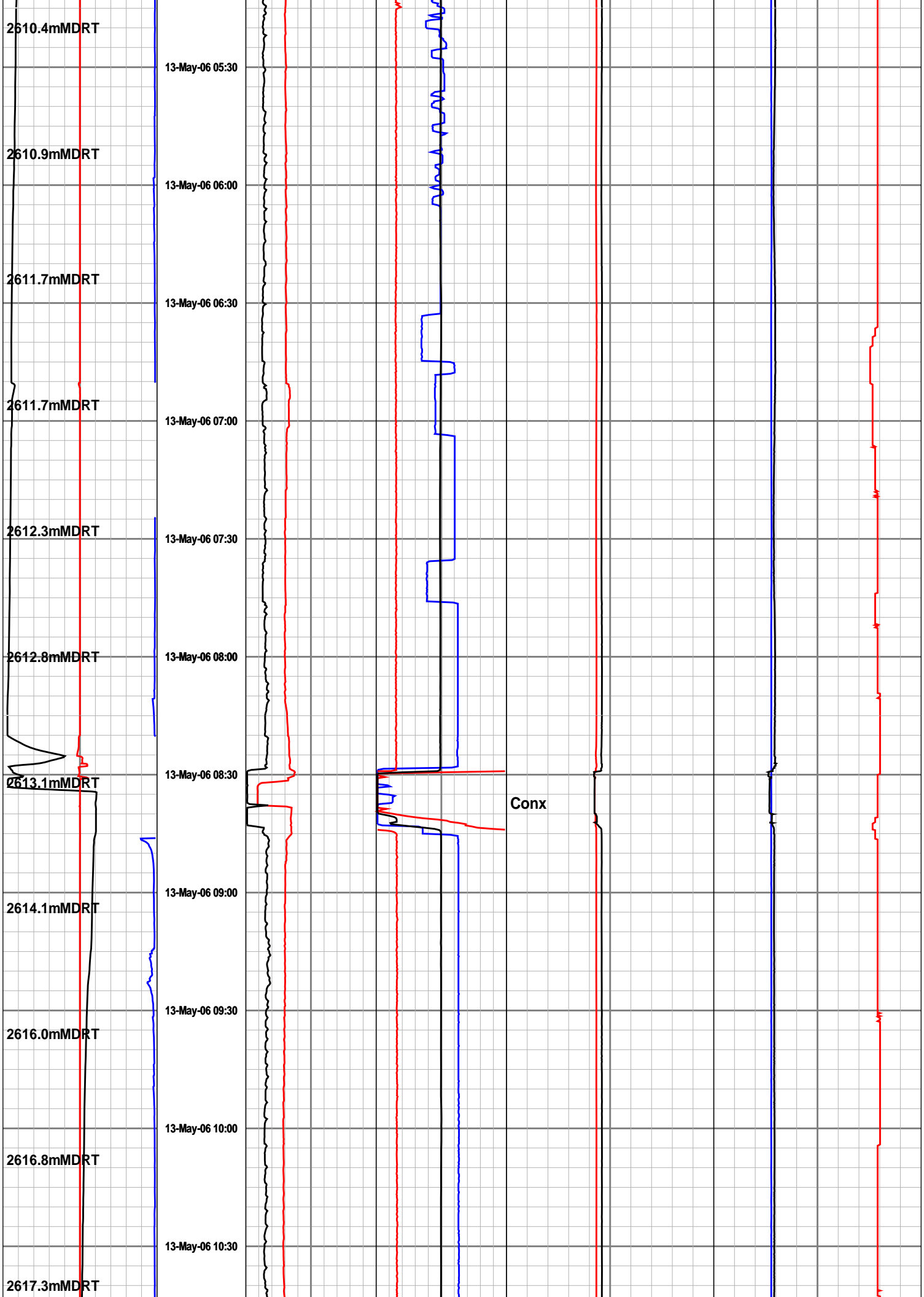


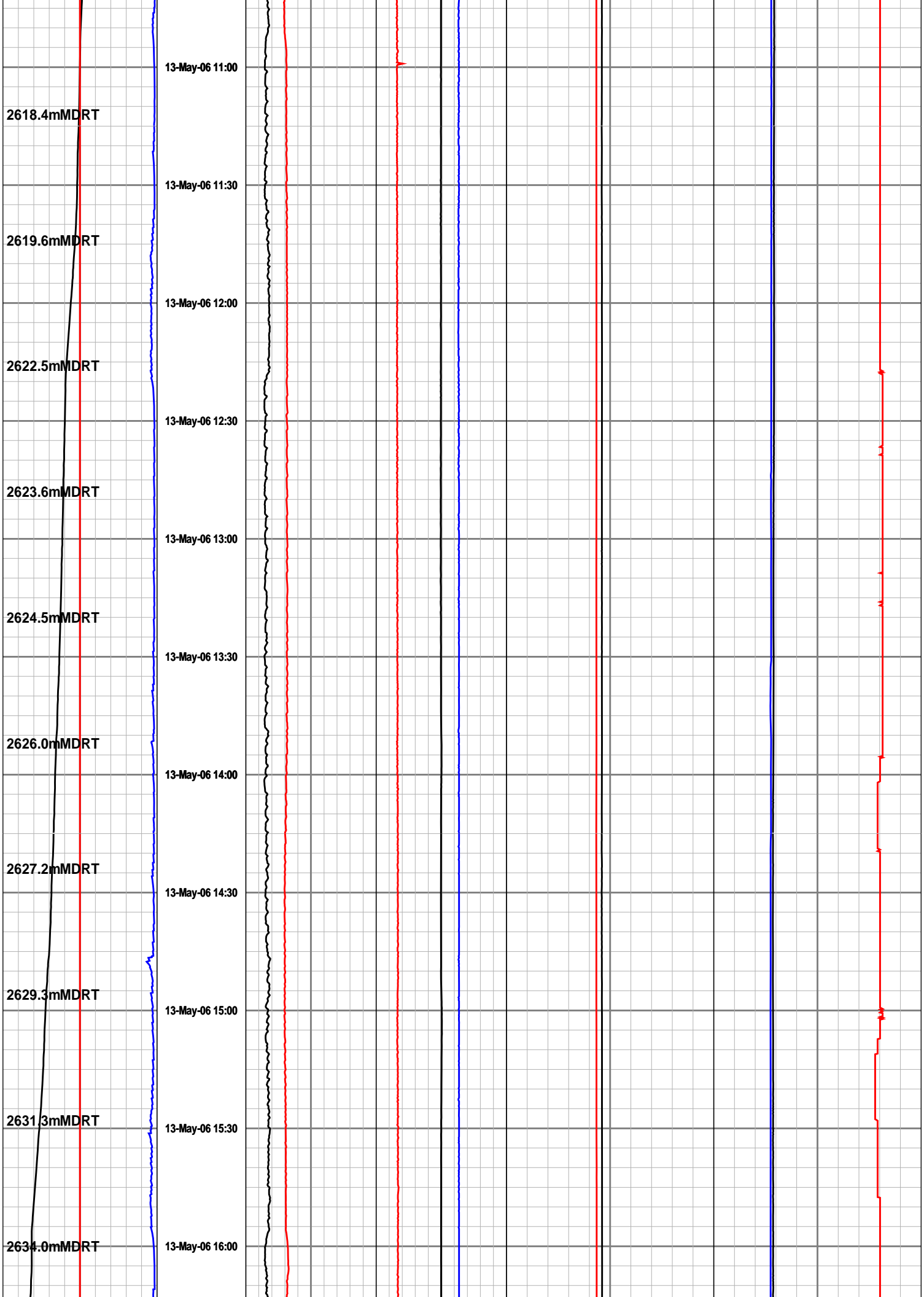


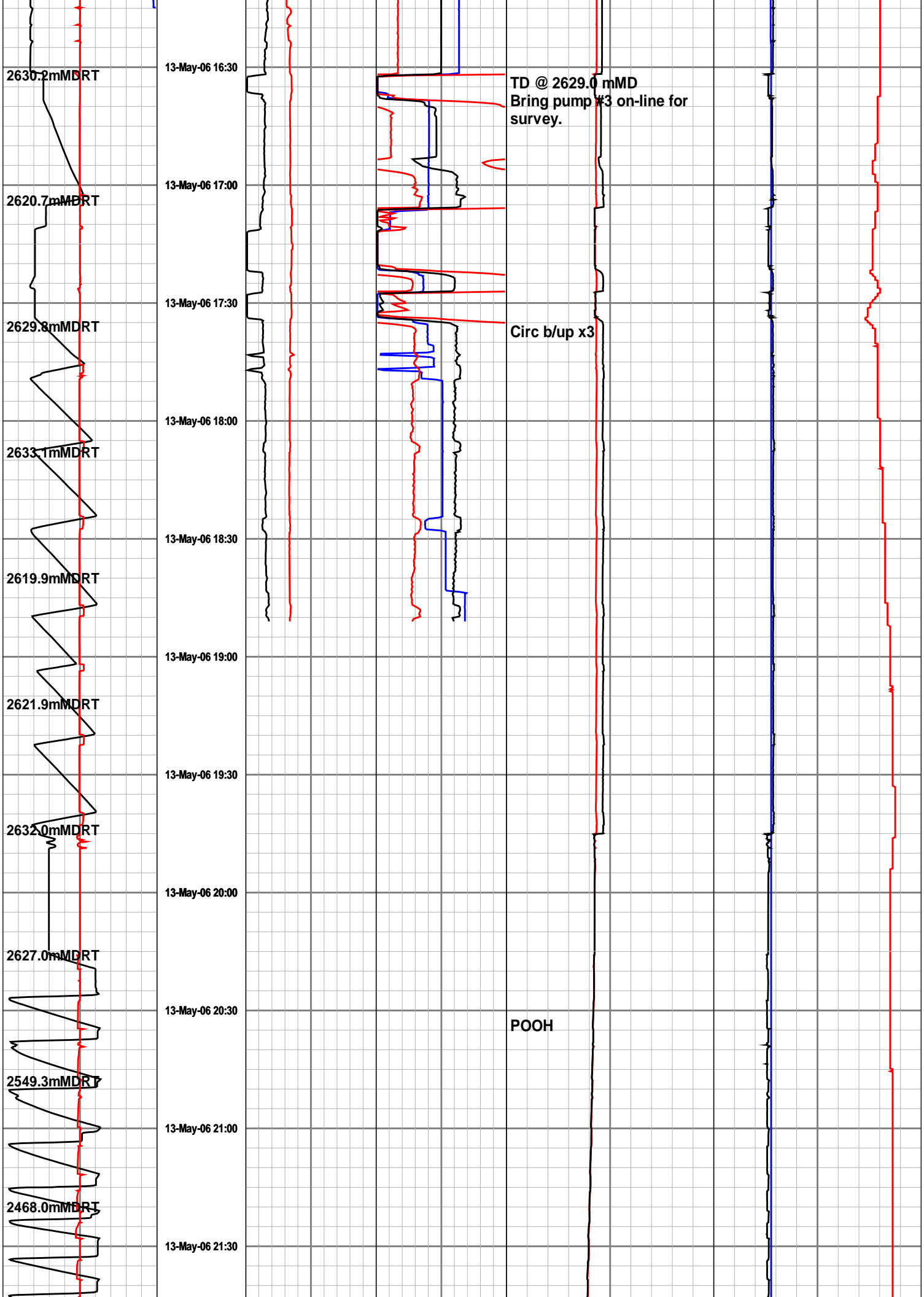


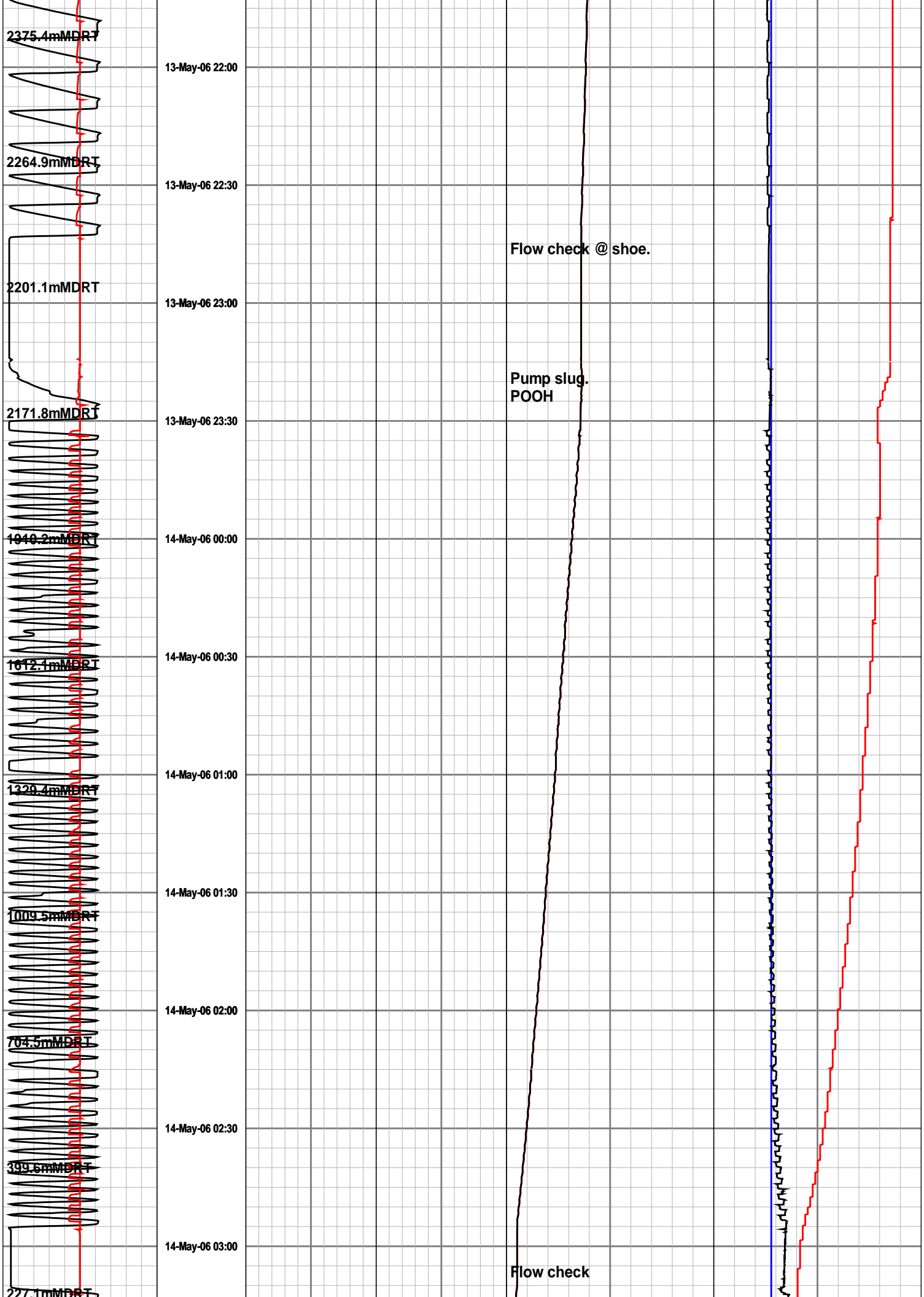


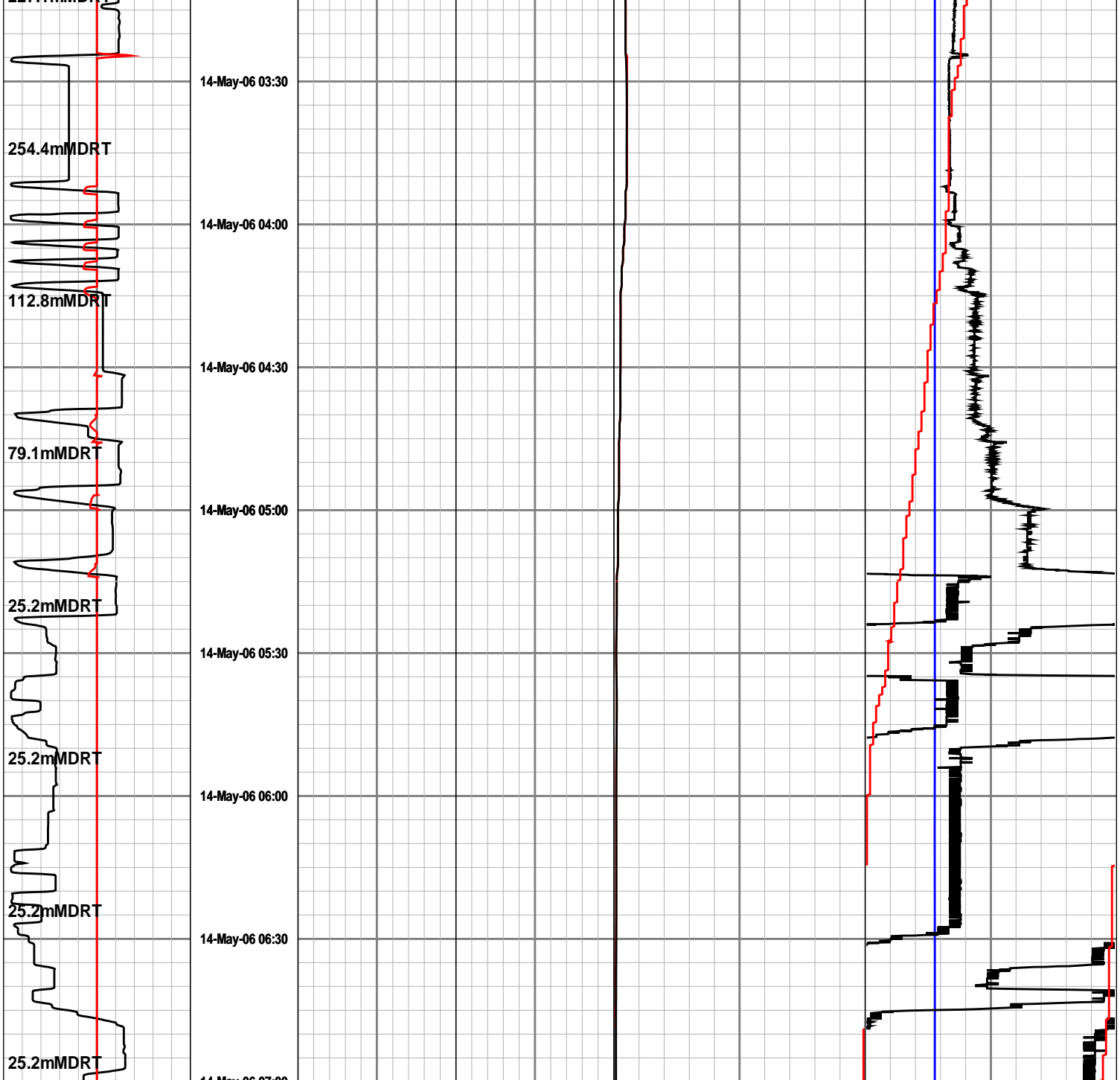












Block Position	Time	Torque	SPP	Internal Pressure-PWD	Annular EMW-PWD
0 25 50	min	0 25 50	0 3K 6K	0 5K 10K	1 1.5 2
metres		foot-klb	lbs / in2 gauge	lbs / in2 gauge	Sp Grav
Running Speed		Hookload	Flow In	Annular Pressure-PWD	Temperature
-150 0 150		0 200 400	0 400 800	0 5K 10K	0 25 50
metre per min		k-lbs	gallon per min	lbs / in2 gauge	celsius
ROP Avg			RPM		Density Mud In
200 100 0			0 100 200		1 1.5 2
metre per hr			rev per min		Sp Grav